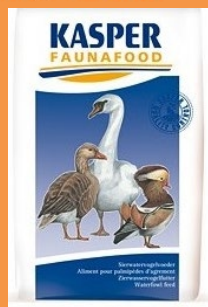


Dry food



St Laurent

Waterfowl super start crumb

Kasper range
(Reference: 400243)

Presentation

COMPLETE FEED FOR CHICKENS OF WATERFOWL UP TO 2 WEEKS OF AGE

Recommendations

To feed for up to the first two weeks of the rearing period

Pack size

Bag of 20 kg (Ref. 400243)

Composition

Soybeanmeal feed*, wheat, maize, toasted soybeans*, maizegluten, soybean oil, cane molasses, alfalfa, calcium carbonate, wheypowder, seaweed meal, monocalcium phosphate, sodium chloride, medium chain fatty acids esterified with glycerol, dried algae.

Crude protein	%	32
Crude fat	%	6.50
Crude fiber	%	3.40
Crude ash	%	7.50

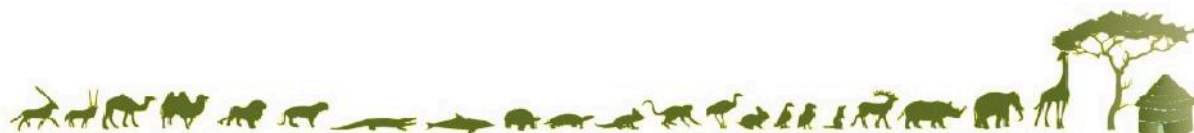
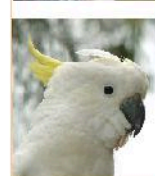
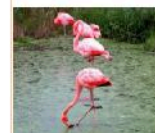
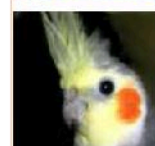
Instructions

Store in a cool dry place
Serve with clean fresh water freely available

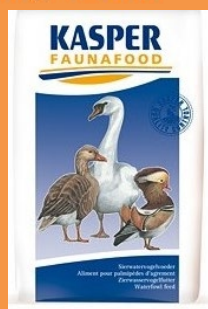
Contact

commercial@st-laurent.fr
www.st-laurent.fr

Last update : 20/11/2019



Dry food



St Laurent

Waterfowl super start crumb

Kasper range
(Reference : 400243)

COMPLETE ANALYSIS

Analytic constituents			Nutritional additives		
Crude protein	%	32	Vitamin A	UI/kg	18750
Crude fat	%	6.50	Vitamin D3	UI/kg	3250
Crude fibre	%	3.40	Vitamin E	UI/kg	65
Crude ash	%	7.50	Copper	mg/kg	18
Lysine	%	1.80	Iron	mg/kg	72
Methionine	%	0.50	Manganese	mg/kg	96
Calcium	%	0.93	Zinc	mg/kg	72
Phosphorus	%	0.57	Iodine	mg/kg	1.20
Sodium	%	0.17	Sélénium	mg/kg	0.20
Energy			Complementary additives		
Energy	kcal/kg	2695	Canthaxantin	mg/kg	3



Last update : 20/11/2019

