

Dry food



St Laurent

Regular
Lundi range
(Reference : 400310)

Presentation

Floating extruded food combining a balance of nutriments, vitamins and minerals for optimum nutrition.
Hygienic (mould resistant).
Guaranteed no preservatives or bonemeal.
Very firm nuggets, weather resistant, will not create dust and economical.
Longer buoyancy.
Contains real sea salt and spirulina for a natural diet.

Pack size

Bag of 15 kg (Ref. 400310)

Recommendations

Maintenance food ideal for all ornamental water birds (ducks, geese, swans, cranes, waders, flamingos...)

Composition

Wheat, Corn (maize), Fish meal, Lucerne (alfalfa), Mineral premix, Toasted sugar beet, Shrimps, Seaweed, Vitamin premix

Crude protein	%	20
Crude fat	%	3,50
Crude fibre	%	4
Crude ash	%	7

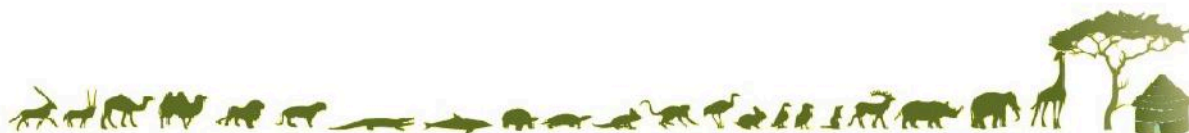
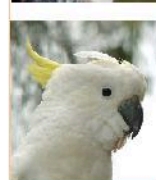
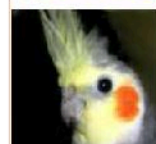
Instructions

Feed dry or scatter on the surface of a water bowl
Store in a cool dry place
Serve with clean fresh water freely available

Contact

commercial@st-laurent.fr

www.st-laurent.fr



Dry food



St Laurent

Régular

Lundi range

(Reference : 400310)

COMPLETE ANALYSIS

Crude protein	%	20	Vitamin A	UI/kg	10000
Crude fat	%	3,50	Vitamin D3	UI/kg	3000
Crude fibre	%	4	Vitamin E	mg/kg	40
Crude ash	%	7	Vitamin C	mg/kg	20
Calcium	%	1,30	Biotin	µg/kg	200
Phosphorus	%	0,90			
Sodium	%	0,30			

Daily ration				
Quantity / body weight	Quantity / animal	Nb distribution / day	Volume / week	Volume / month

